



SPILL RETENTION TRAY

"Max" square retention tray

In polyethylene

- ▶ Ideal for storing cubitainers and other container or 1000 L

TECHNICAL SPECIFICATIONS

| Reference | Description | Dimensions in mm L x W x H |
|-------------|-----------------------|-------------------------------|
| 07030100007 | "Max" 1200-Litre tray | 900 x 1300 x 1170 |



Retention platform

For battery

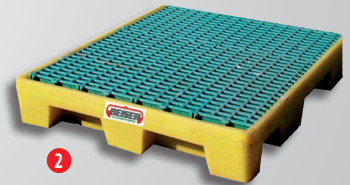
- ▶ Store your batteries in complete safety in accordance with the standards

ADVANTAGES

- + If a leakage occurs, the retention tray collects the pollutant liquids

TECHNICAL SPECIFICATIONS

| Reference | Description | Dimensions in mm LxWxH |
|---------------|-----------------|------------------------|
| 1 07030100005 | Longitudinal | 1240 x 625 x 115 |
| 2 07030100006 | Square platform | 1245 x 1245 x 115 |



Drum rack

In polyethylene

- ▶ Allows you to place the drums horizontally on your retention trays

ADVANTAGES

- + Obviates the need for a pump to extract the oil from the drums
- + Possible to stack several drums

TECHNICAL SPECIFICATIONS

| Reference | Description | Dimensions in mm LxWxH |
|-------------|--|---------------------------|
| 07030300004 | 1-drum rack from 60 L / 208 L reversible | 500 x 390 x 390 |
| 07030300003 | 2-drum stackable rack | 1265 x 585 x 388 |

